



CORLEONE 5628-440



CORLEONE 5628-440

Model number: 56CFT28563BH17S

3 beds • 2 baths • 1568 sq.ft. • 28' width • 56' depth

Our home building facilities invest in continuous product and process improvements. Plans, dimensions, features, materials, specifications and availability are subject to change without notice or obligation. Renderings and floor plans are representative likenesses of our homes and may differ from the actual homes. We invite you to tour a Home Center near you and inspect the highest value in quality housing available or call (518) 885-8050 to speak with a Home Consultant. Copyright 2017, CMH. All rights reserved.

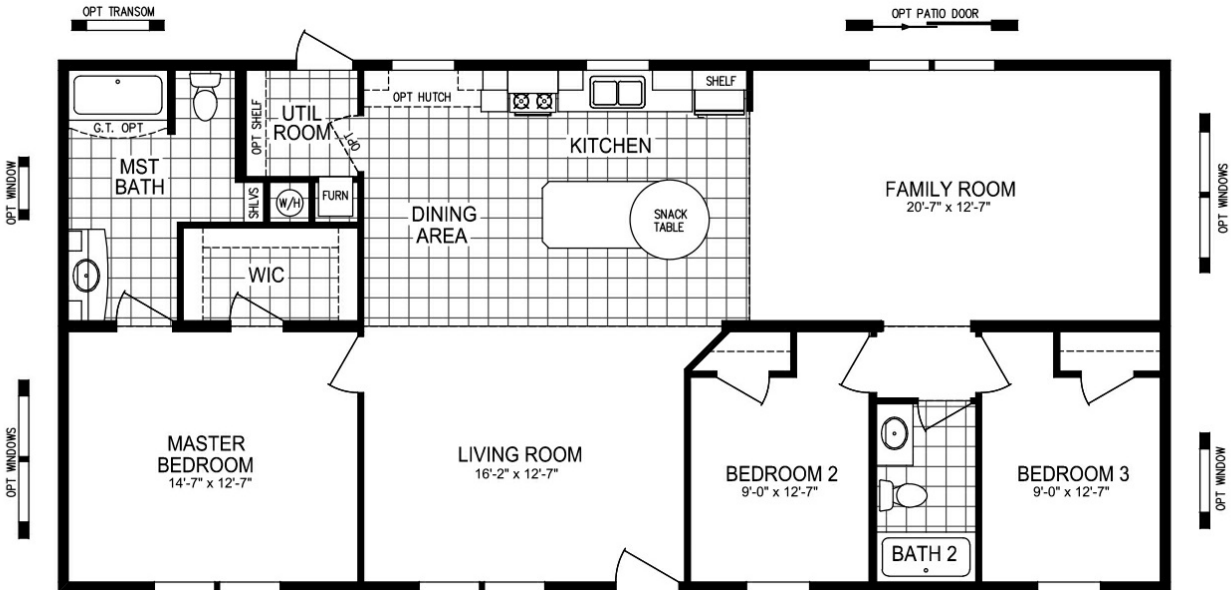
<http://gihomesballstonspa.com>

**G & I HOMES-BALLSTON
SPA**

**2138 DOUBLEDAY AVENUE
BALLSTON SPA, NY 12020**

Monday - Thursday: 9am - 7pm
Friday: 9am - 6pm
Saturday: 9am - 5pm
Sunday: Closed

(518) 885-8050



CORLEONE 5628-440

Model number: 56CFT28563BH17S

3 beds • 2 baths • 1568 sq.ft. • 28' width • 56' depth

Our home building facilities invest in continuous product and process improvements. Plans, dimensions, features, materials, specifications and availability are subject to change without notice or obligation. Renderings and floor plans are representative likenesses of our homes and may differ from the actual homes. We invite you to tour a Home Center near you and inspect the highest value in quality housing available or call (518) 885-8050 to speak with a Home Consultant. Copyright 2017, CMH. All rights reserved.

<http://gihomesballstonspa.com>

**G & I HOMES-BALLSTON
SPA**

**2138 DOUBLEDAY AVENUE
BALLSTON SPA, NY 12020**

Monday - Thursday: 9am - 7pm
Friday: 9am - 6pm
Saturday: 9am - 5pm
Sunday: Closed

(518) 885-8050