



CFT 8016-4021



**CFT 8016-4021** Model number: 56CFT16763BH16

**3 beds • 2 baths • 1216 sq.ft. • 16' width • 76' depth**

Our home building facilities invest in continuous product and process improvements. Plans, dimensions, features, materials, specifications and availability are subject to change without notice or obligation. Renderings and floor plans are representative likenesses of our homes and may differ from the actual homes. We invite you to tour a Home Center near you and inspect the highest value in quality housing available or call (518) 885-8050 to speak with a Home Consultant. Copyright 2017, CMH. All rights reserved.

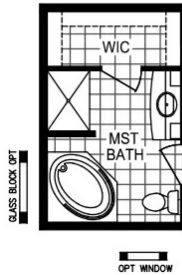
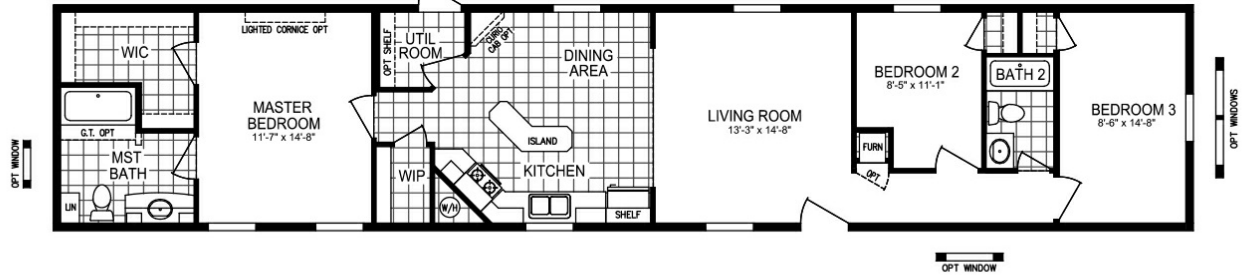
<http://gihomesballstonspa.com>

**G & I HOMES-BALLSTON  
SPA**

**2138 DOUBLEDAY AVENUE  
BALLSTON SPA, NY 12020**

Monday - Thursday: 9am - 7pm  
Friday: 9am - 6pm  
Saturday: 9am - 5pm  
Sunday: Closed

(518) 885-8050



**CFT 8016-4021** Model number: 56CFT16763BH16  
**3 beds • 2 baths • 1216 sq.ft. • 16' width • 76' depth**

Our home building facilities invest in continuous product and process improvements. Plans, dimensions, features, materials, specifications and availability are subject to change without notice or obligation. Renderings and floor plans are representative likenesses of our homes and may differ from the actual homes. We invite you to tour a Home Center near you and inspect the highest value in quality housing available or call (518) 885-8050 to speak with a Home Consultant. Copyright 2017, CMH. All rights reserved.

<http://gihomesballstonspa.com>

**G & I HOMES-BALLSTON  
SPA**

**2138 DOUBLEDAY AVENUE  
BALLSTON SPA, NY 12020**

Monday - Thursday: 9am - 7pm  
 Friday: 9am - 6pm  
 Saturday: 9am - 5pm  
 Sunday: Closed

(518) 885-8050